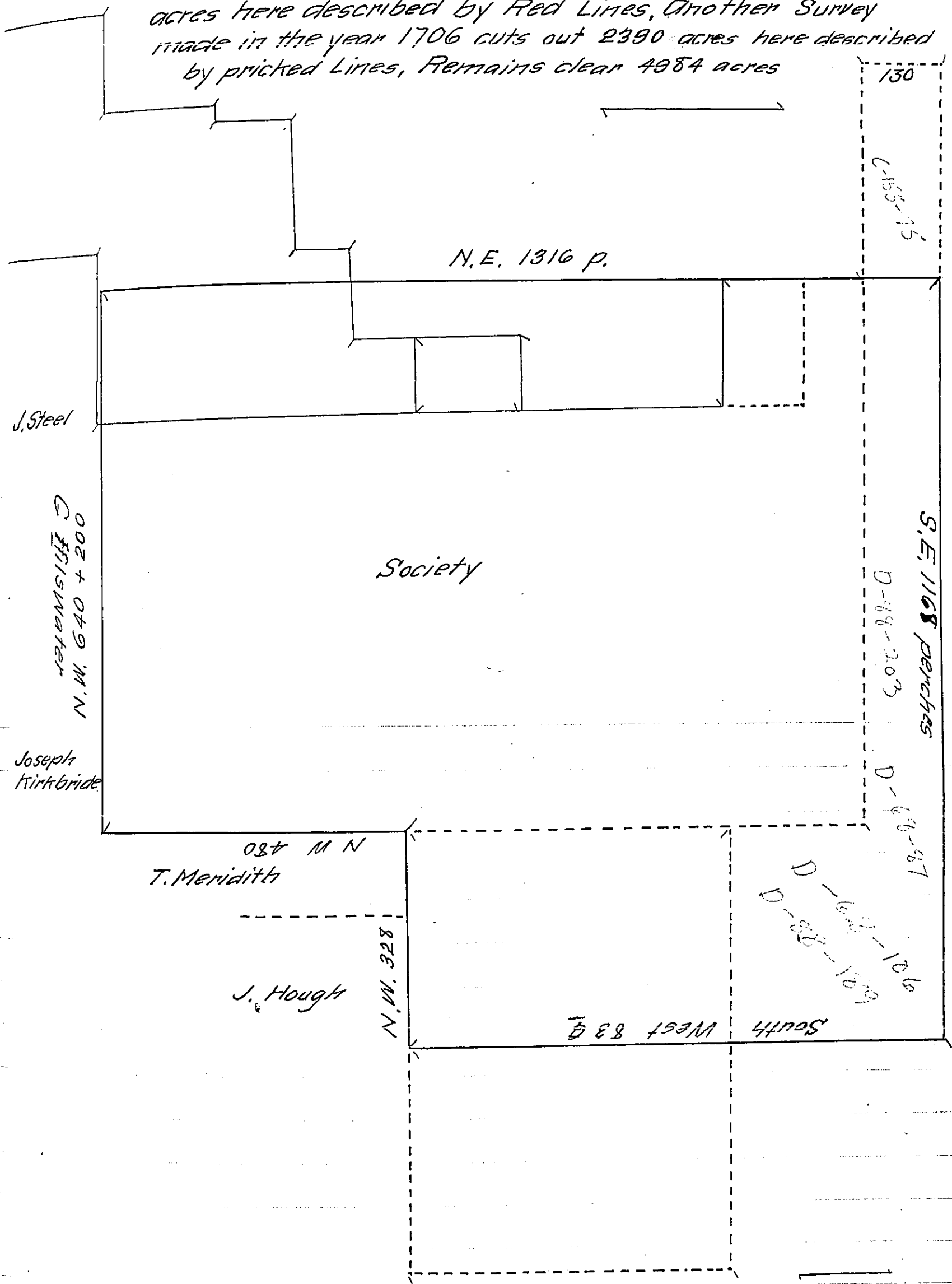


FORM No. 1.

The black lines supposed the old lines of the Society Tract contain 8612 acres T Stevenson's late Survey takes 1232 acres here described by Red Lines, Another Survey made in the year 1706 cuts out 2390 acres here described by pricked Lines, Remains clear 4984 acres



IN TESTIMONY that the above is a copy of the original remaining on file in the Department of Internal Affairs of Pennsylvania, made conformably to an Act of Assembly approved the 16th day of February, 1833, I have hereunto set my Hand and caused the Seal of said Department to be affixed at Harrisburg, this Second day of November, 1910.

Henry Hoover
Secretary of Internal Affairs.